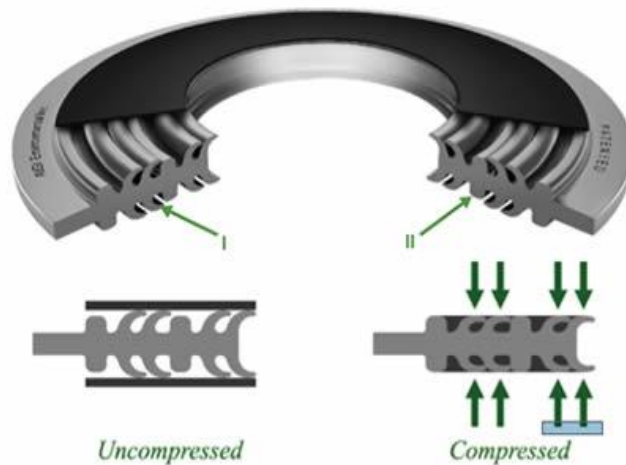
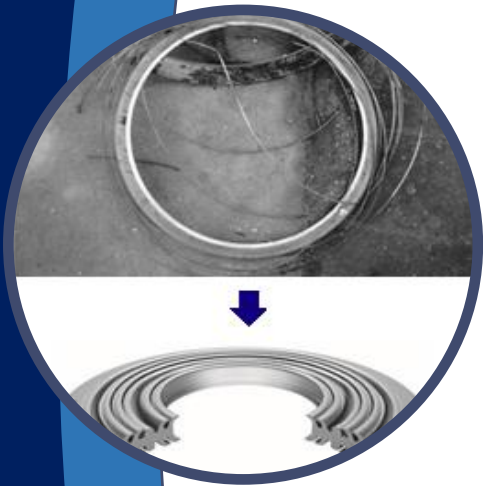


**THE FUTURE OF HIGH
PERFORMANCE SEALING IS
HERE:**

FISHBONE GASKETS





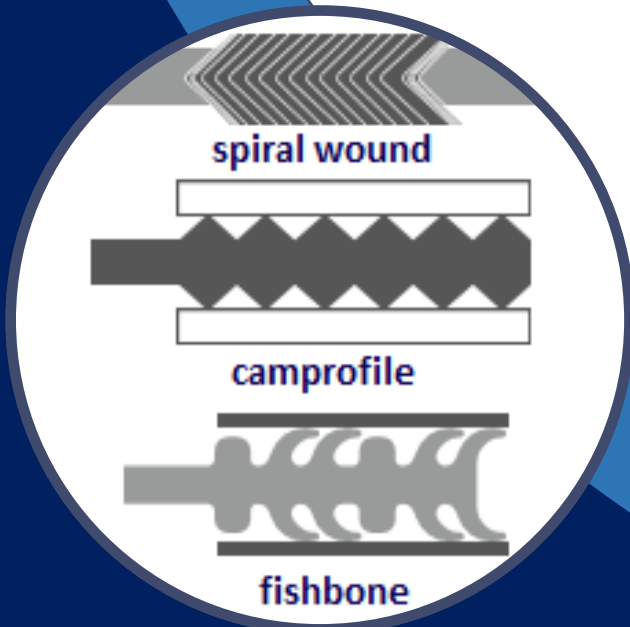
DESIGN

- Helical concentric bevelled ribs each side covered with Graphite, PTFE or Mica
- Unitary design with or without a centre ring.
- Rounded, Non sharp contact surface
- Unique stop-step design



ADVANTAGES

- Internally self-energized and by fluid pressure for better sealing performance
- Interchangeable with all spiral wound gaskets and Camprofile gaskets
- Will not damage flange surface like Camprofile gaskets and spiral wound gaskets
- Prevents over-compression of sealing elements.



APPLICATIONS

- Critical Flange Applications
- Steam Sealing
- Low Emission Sealing
- Fire Safe Requirements
- High Pressure Flanges
- Piping and equipment
- Direct replacement of all Spiral wound gaskets and Camprofile gaskets.